

Measuring Economic Progress in 2019



10,000
RI WORKS
PARENTS AND CHILDREN



no longer have a disruption in benefits after 24 months, having continued access to work readiness services and cash assistance.

70



articles mentioning the impact of the Institute on issues that affect everyday Rhode Islanders.

WEIGHED
IN ON

50



bills during the 2019 legislative session, advocating for investments and programs that benefit low- and moderate-income Rhode Islanders.

WELCOMED

3 NEW POLICY ANALYSTS
to work on issues that will take our advocacy and analysis to the next level!



Alan Krinsky



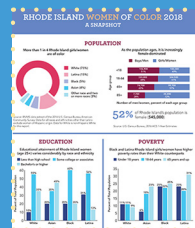
La-Brina Almeida



Sarah Trayers

PUBLISHED

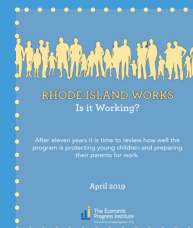
10 REPORTS & ISSUE BRIEFS



Rhode Island Women of Color Infographic



2018 Rhode Island Standard of Need



Rhode Island Works: Is It Working?

providing in-depth analyses of issues impacting the fiscal health of the state and its residents.

LED DISCUSSION WITH

200+



participants on the importance of immigrants to Rhode Island at our 11th annual policy and budget conference.



2019-H 5245, 5526
Acts Relating to Taxation --

CAPITOL

2019-H 5399
An Act Relating to Taxation --

CAPITOL

THE ECONOMIC PROGRESS INSTITUTE ANNUAL REPORT 2019



Dear Friends,

As you'll read more about in this report, with your investment we have ensured that low-income families are able to access needed work support and cash assistance benefits that allow them to meet their basic needs.

With your support we also were able to prevent unnecessary tax cuts for the wealthiest Rhode Islanders, ensuring our state has the adequate resources to make sure everyone can make it in Rhode Island.

We've also grown this year, adding three new policy staff to help us expand our research and advocacy to better help Rhode Islanders.

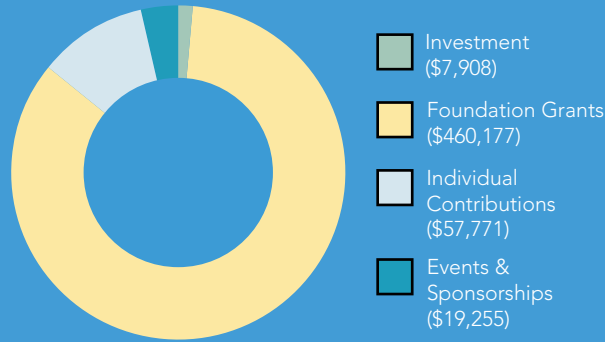
On behalf of the board and staff, we thank you for your support and hope you will join us in our advocacy in the coming year as we work, together, to build a stronger Rhode Island for all.

Onwards,

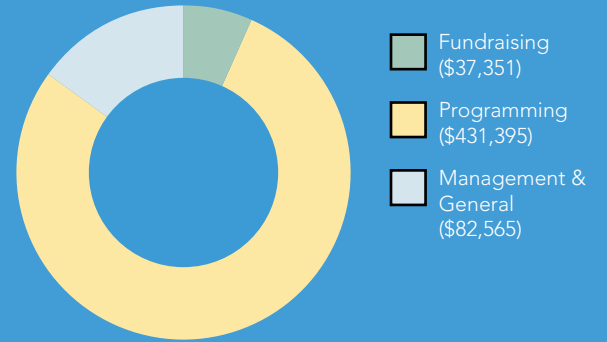
Rachel Flum
Executive Director

Carolyn Mark
Board Chair

INCOME



EXPENDITURES



BOARD OF DIRECTORS

- **Carolyn Mark, Chair**
East Greenwich School Committee
- **Jessica Holden Sherwood, Vice Chair**
Johnson and Wales University
- **Hugh Minor, Secretary**
Rhode Island Community Food Bank
- **Roberta (Sue) Pearlmuter, Treasurer**
Rhode Island College
- **Jill Beckwith**
Bridgewater State University
- **Lisa Roth Blackman**
Rhode Island Community Food Bank
- **Julie DiBari**
The Capacity Group
- **Paola Fernandez**
Centreville Bank
- **Robert Ferreira**
Duxford Capital Advisors, LLC
- **Joseph Grady**
Topos Partnership
- **Eric Hirsch**
Providence College
- **Tricia Leddy**
Center for Health Strategies
- **Jeffrey Levy**
Levy & Blackman, LLP
- **Quadry Olalekan**
Unicom Engineering
- **Richard Streitfeld**
Aaronson, Lavoie, Streitfeld, Diaz
- **Matthew Shumate**
City of Providence

STAFF

- **Rachel Price Flum, J.D.**
Executive Director
- **Linda Katz, J.D.**
Policy Director
- **Alan Krinsky, Ph.D., MPH**
Senior Policy Analyst
- **Juan Espinoza, M.S.**
Communications & Development Director
- **La-Brina Almeida, M.S.W.**
Junior Policy Analyst
- **Sarah Trayers, M.Ed.**
Junior Policy Analyst
- **Karina Tordoya**
Administrative Assistant

OUR PHILANTHROPIC PARTNERS: THE ANNIE E. CASEY FOUNDATION • THE CARTER FAMILY CHARITABLE TRUST
• FAMILY VALUES AT WORK • THE RHODE ISLAND FOUNDATION • THE STONEMAN FAMILY FOUNDATION
• UNITED WAY OF RHODE ISLAND

LIKE US



EconomicProgressRI

FOLLOW US



@EconProgressRI



epi_ri