

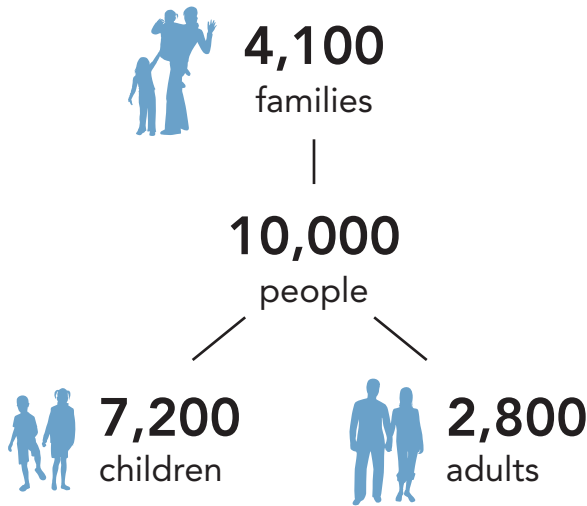
RHODE ISLAND WORKS

Is it Working?

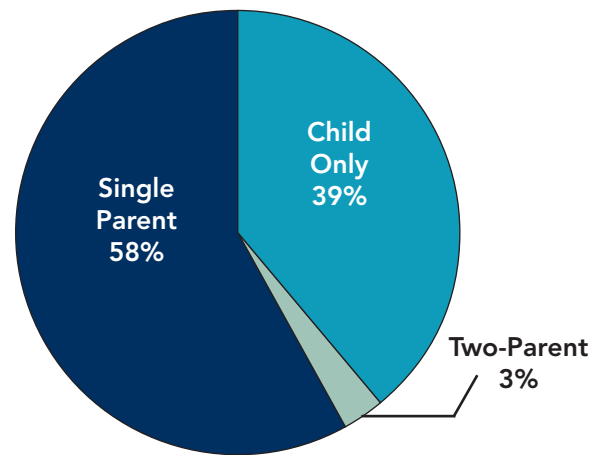


RI Works (RIW) is the state's safety net program that provides cash assistance and work readiness services to low-income families with children under age 18. RI Works was passed in 2008. It replaced the state's first welfare program, the Family Independence Program, enacted after the Temporary Assistance to Needy Families (TANF) block grant was passed. Eleven years after implementation of RI Works it is time to review who the program is serving and how well it is achieving its purposes of protecting young children and preparing parents for employment.

Who Receives Rhode Island Works

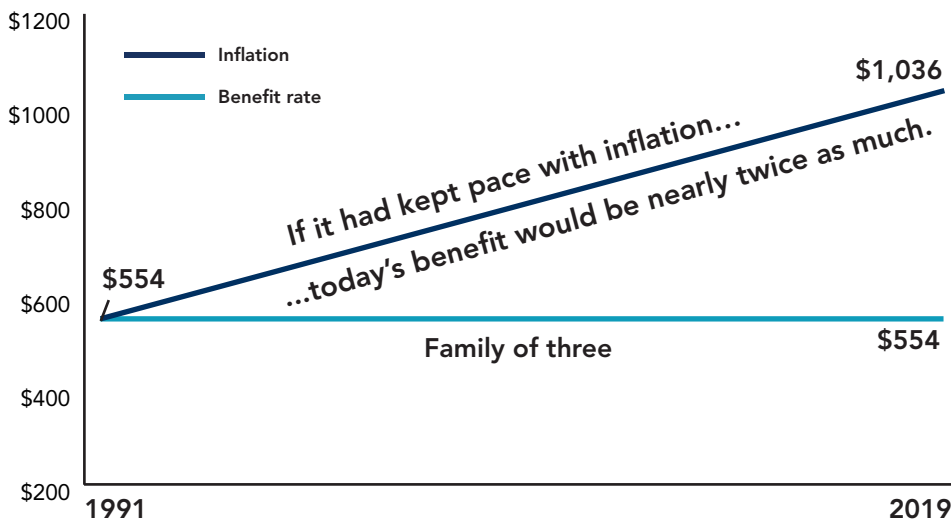


Types of Families



Source: RI Department of Human Services, RI Bridges Database, December 2018.

The Rhode Island Works Benefit Hasn't Been Adjusted in Almost 30 Years



Source: CPI Inflation Calculator, Bureau of Labor and Statistics.

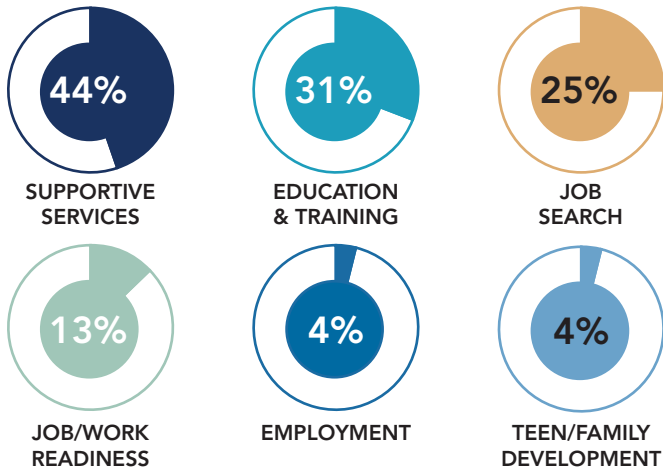
Families are Living in Poverty

Income for a Family of 3	
RIW Benefit	\$554
SNAP Benefit	\$504
Total Income	\$1,058
Federal Poverty Level (2018)	\$1,732
Standard of Need	\$2,490

Total income is 40% below the federal poverty level

Source: Economic Progress Institute 2018 Rhode Island Standard of Need.

Parents Participate in a Variety of Work Activities



Approximately 20% of parents engaged in multiple activities during the month.*

*Numbers show what percentage of parents are engaged in each activity, whether parents engaged in one or more activities. Therefore, percentages add up to more than 100%. Source: RI Department of Human Services, RI Bridges Database, December 2018; some cases may have a work exemption and work activity/activities during the same month.

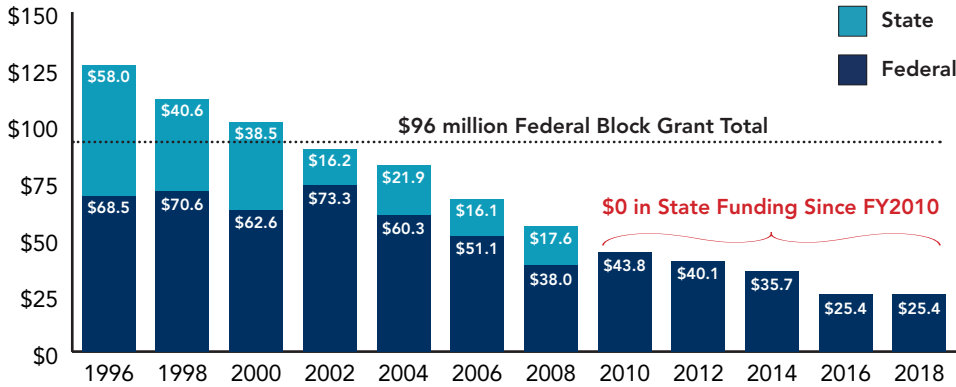
Rhode Island Time Limits are the Most Restrictive in New England

State	Lifetime Limit (months)	Periodic Limit (months)
Connecticut	60	none
Maine	60	none
Massachusetts	none	24*
New Hampshire	60	none
Rhode Island	48	24
Vermont	60	none

And only one of eight states nationally that has a periodic time limit for all families.

* Applies to non-exempt families only. Families can request an extension. Source: Welfare Rules Database: State TANF Policies as of July 2017.

Rhode Island Spending on Benefits (in millions) State Funds End in FY2010, Federal Funds Continue to Decline



Source: Rhode Island KIDS Count 2019 Factbook

Rhode Island Spends Less in Federal & State Funds than National Average for:

Basic Assistance

10% RI vs 23% National

Work Activities

7% RI vs 11% National

Source: How States Use Funds Under the TANF Block Grant, Center on Budget and Policy Priorities, February 19, 2019. Analysis of U.S. Department of Health & Human Services TANF Financial Data 2017.

Rhode Island Works Helps Parents Succeed

(Only first names used to protect privacy)



KENYELL

I was homeless and staying at a shelter. Staff told me about RI Works. I learned I could go to school to renew my expired CNA license, which I couldn't afford on my own. I couldn't have done it without RI Works.



ELBA

I came to RI from Puerto Rico after Hurricane Maria. The program I went to through RI Works helped me improve my English and get my Pharmacy Technician certificate. Now I work full-time at a local pharmacy.



AMBER

Through working with my case managers, I've learned I am a good mom and a great person and I am worth a little bit more help sometimes. There are so many people who could use that kind of empathy. Now I have the confidence to get a job.